

USB SERIAL DRIVER INSTALLATION - WINDOWS 7

Before install the USB driver switch off the instrument, if it's on, and disconnect it from PC. Unzip the compressed folder "CDM 2.04.16 WHQL Certified.zip" in Documents folder on your PC.

Connect the USB cable supplied to PC; after few seconds a mask appears like Figure 1 below, where you will be informed that device driver installation is not correctly done.

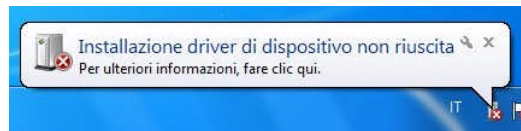


Figure 1 Device driver installation not completed.

One click on that advise and mask showed in Figure 2 will appears for driver installation. Close that mask.

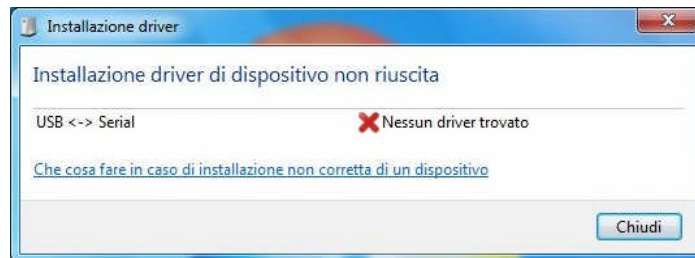


Figure 2 Driver installation.

In Start menu double click on "Devices and printers" icon.

A mask like in Figure 3 will be showed where you can see into "Not specified" section, the USB <-> Serial device.

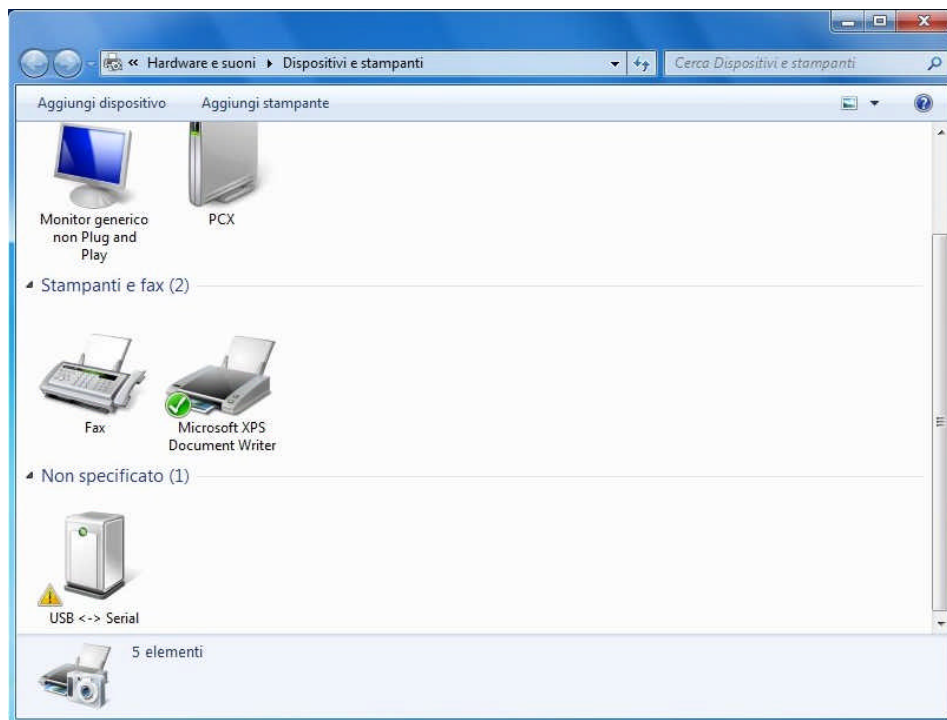


Figure 3 Devices and printers.

Double click on “USB <-> Serial” icon.
The mask of Figure 4 of “USB <-> Serial” properties will be showed.



Figure 4 USB <-> Serial properties.

In Figure 4 mask click on “Hardware” section and you will obtain a mask like Figure 5 below.

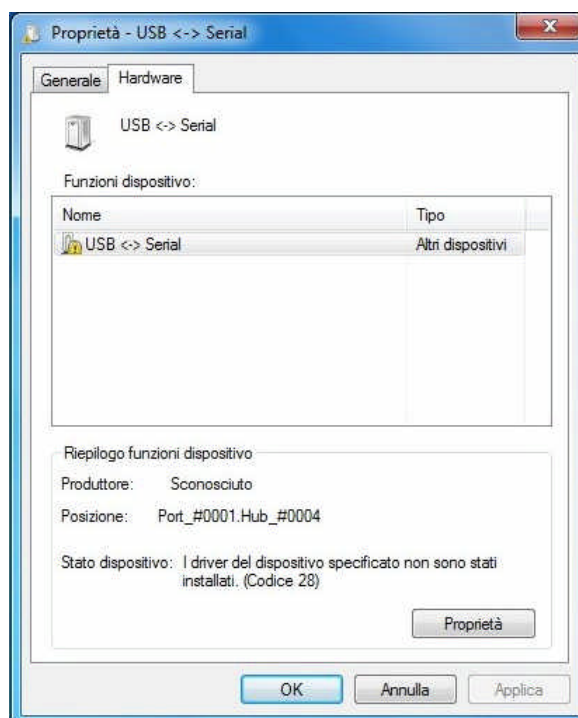


Figure 5 Proprietà – USB <-> Serial.

In Figure 5 mask click on “Properties” button to obtain the new mask in Figure 6 below.

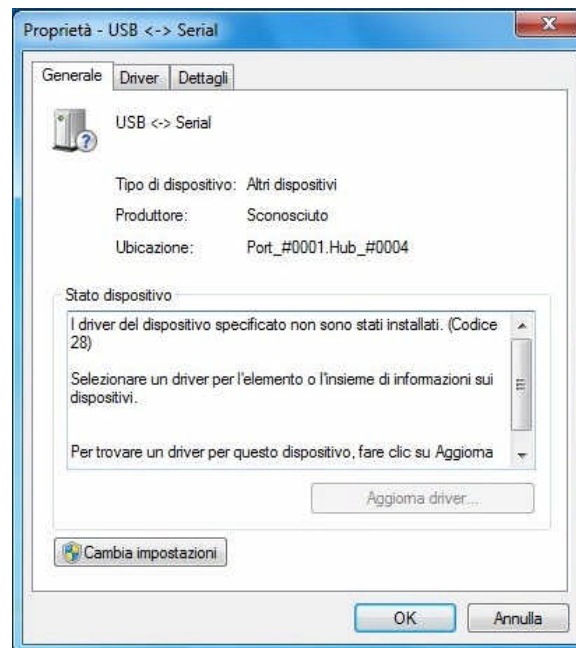


Figure 6 USB <-> Serial properties, Hardware section..

Clicking on “Change settings” the mask in Figure 7 will appear.

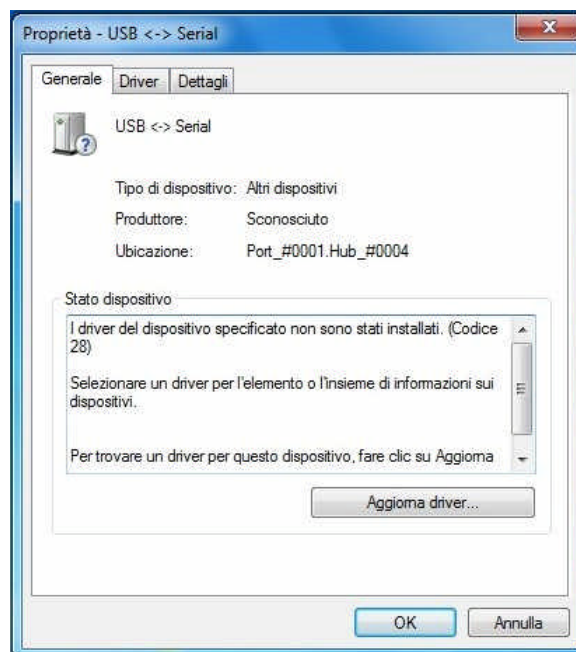


Figure 7 USB <-> Serial properties.

Clicking on “Update driver” button will appear a mask named “software driver USB <-> Serial update” like in Figure 8 below.

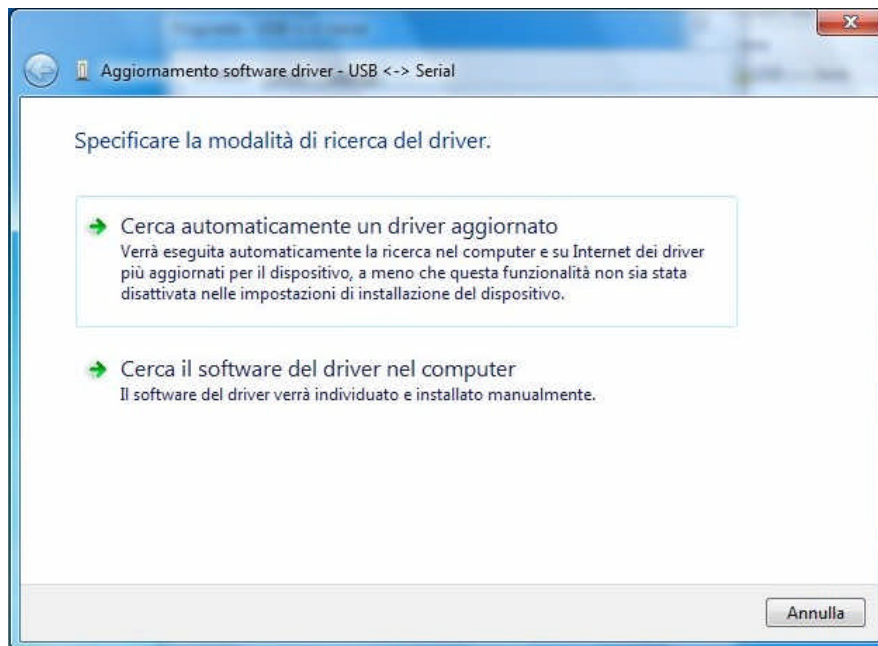


Figure 8 Software driver USB <-> Serial update

Clicking on “Search driver software on PC” selection, you choose the driver path, like in Figure 9 below.

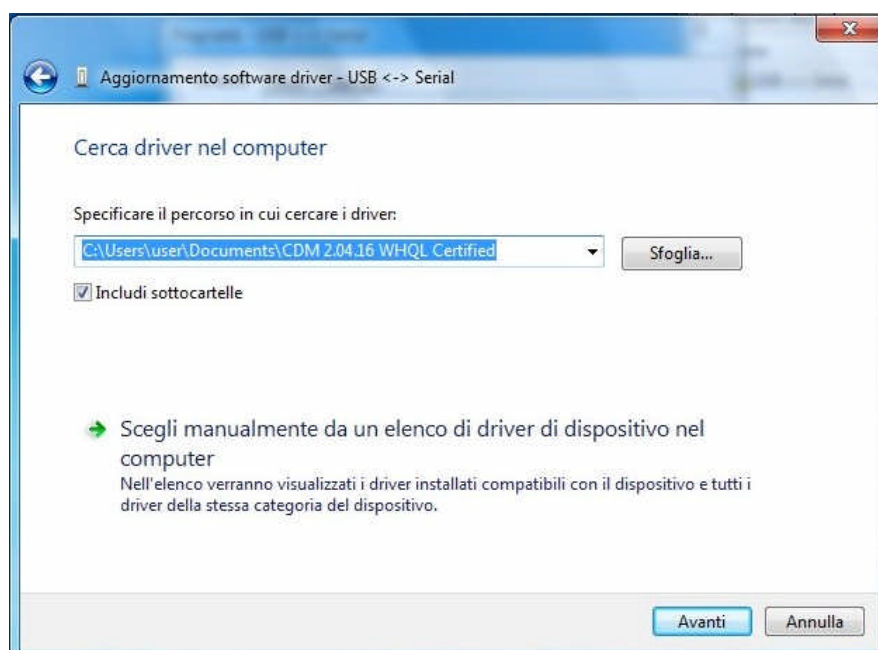


Figure 9 Software driver USB <-> Serial update

Via “Browse” button select the folder where you extracted the files.
Click on “Next” button proceeding with installation of device driver, as showed in Figure 10 below.

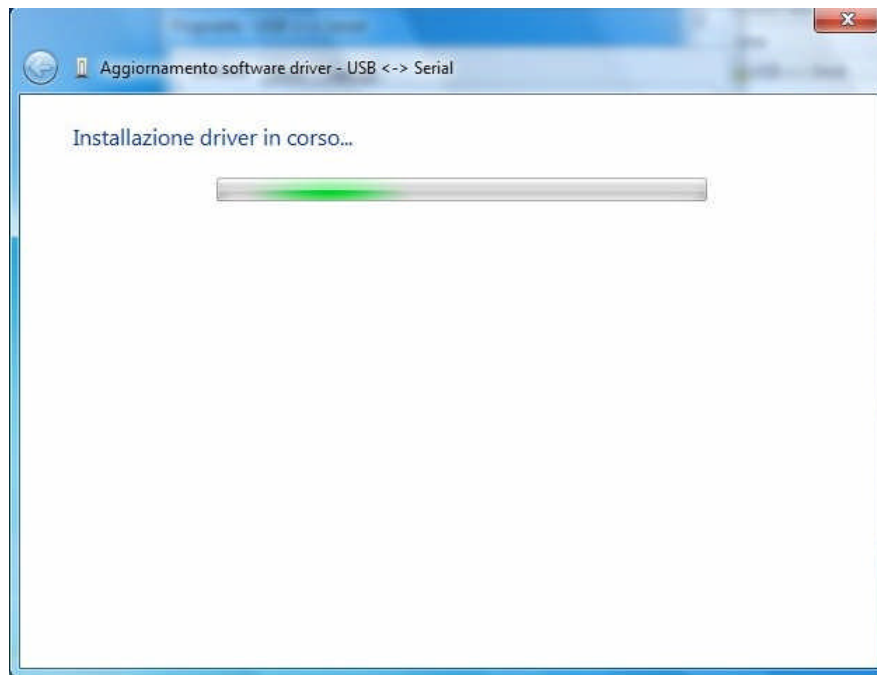


Figure 10 Software driver USB <-> Serial update.
Driver installation in progress.

When the installation is finished, the mask in Figure 11 is showed.
In that mask you are informed that USB Serial Converter driver are successfully installed.

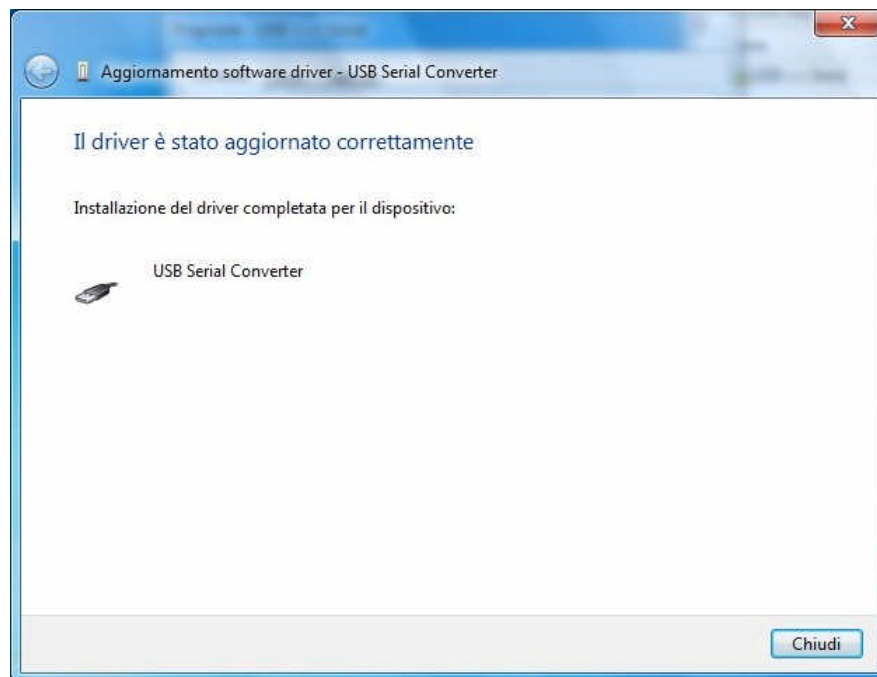


Figure 11 USB Serial Converter Driver installation.

After few seconds on status bar an information will be showed like Figure 12 below.

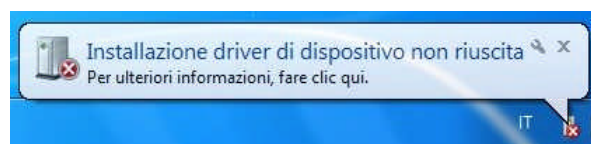


Figure 12 Device driver installation failed.

Close all the masks previously opened, included last one showed in Figure 12.

Into Start menu double click on “Devices and printers” icon.

The mask showed in Figure 13 will appear where, in “Not specified” section, the USB <-> Serial device is showed.

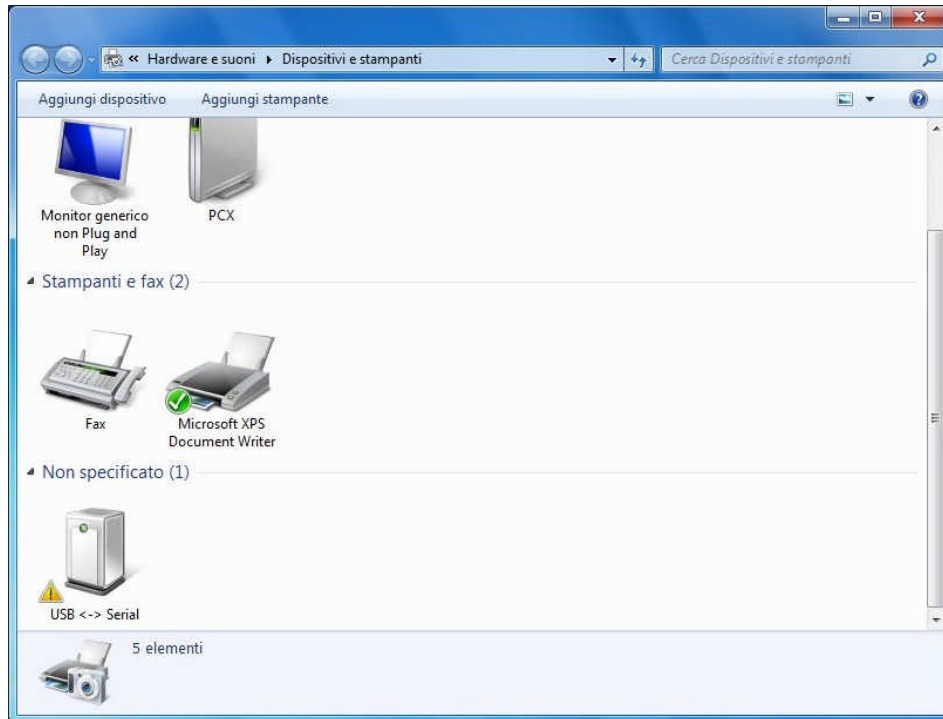


Figure 13 Devices and printers.

Double click on “USB <-> Serial” device icon and the mask of “Properties USB <-> Serial” will appear, like Figure 14.

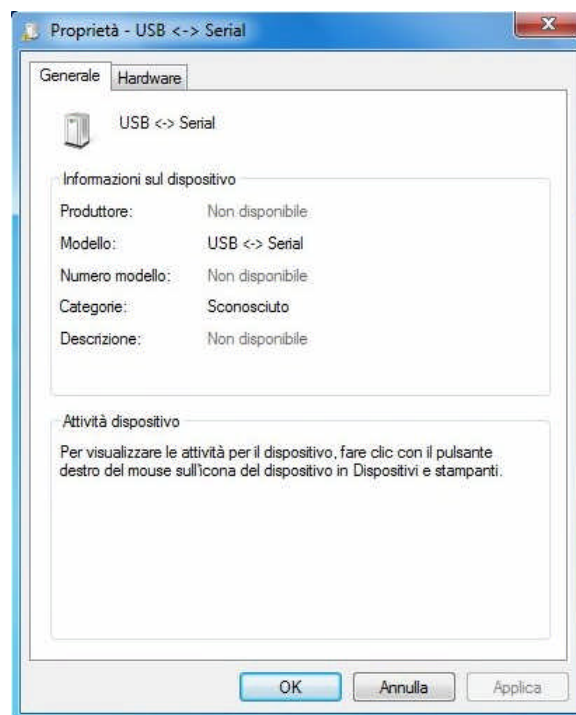


Figure 14 USB <-> Serial Properties.

Into “Hardware” section of Figure 15 mask, click on “USB Serial Port” button and then click on “Properties” button.

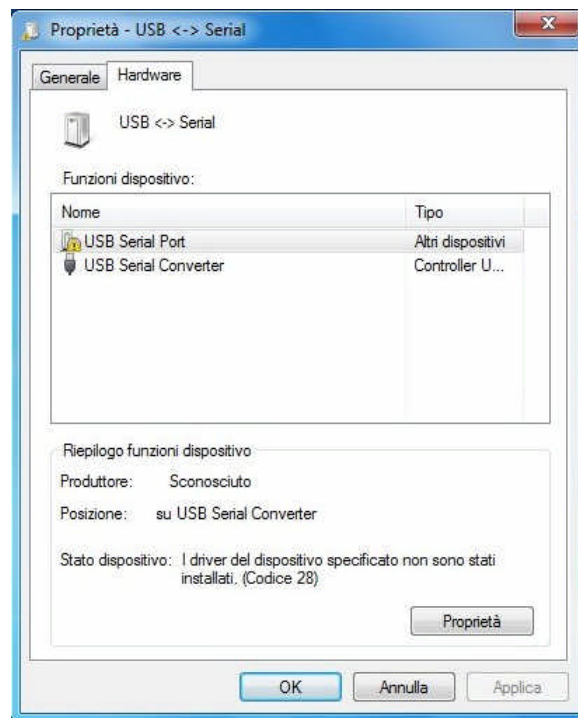


Figure 15 USB <-> Serial Properties. Hardware section.

The mask you can see in Figure 16 will be showed.

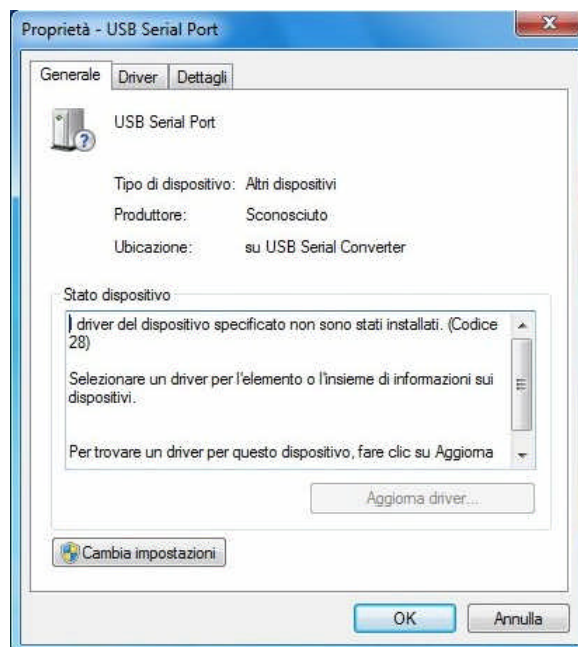


Figure 16 USB <-> Serial Port Properties.

Click on “Change settings” button from the mask, obtaining the one showed in Figure 17 as below.

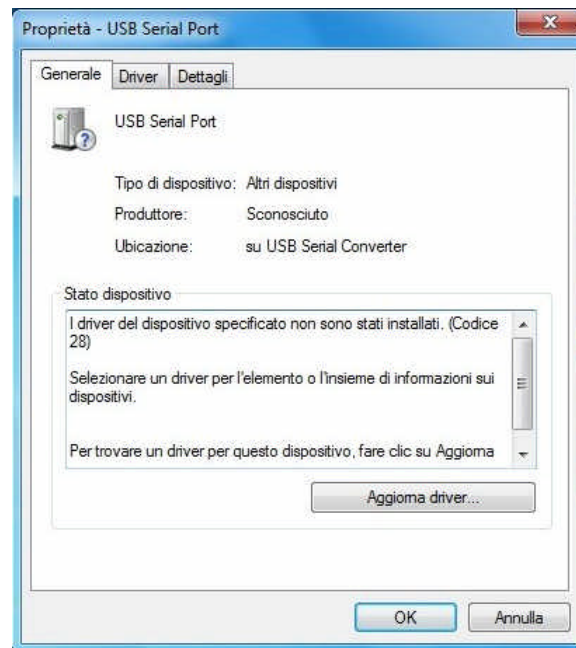


Figure 17 USB <-> Serial Port Properties.

Clicking on “Update driver” button will appear a mask named “software driver USB Serial Port update” like in Figure 18 below.

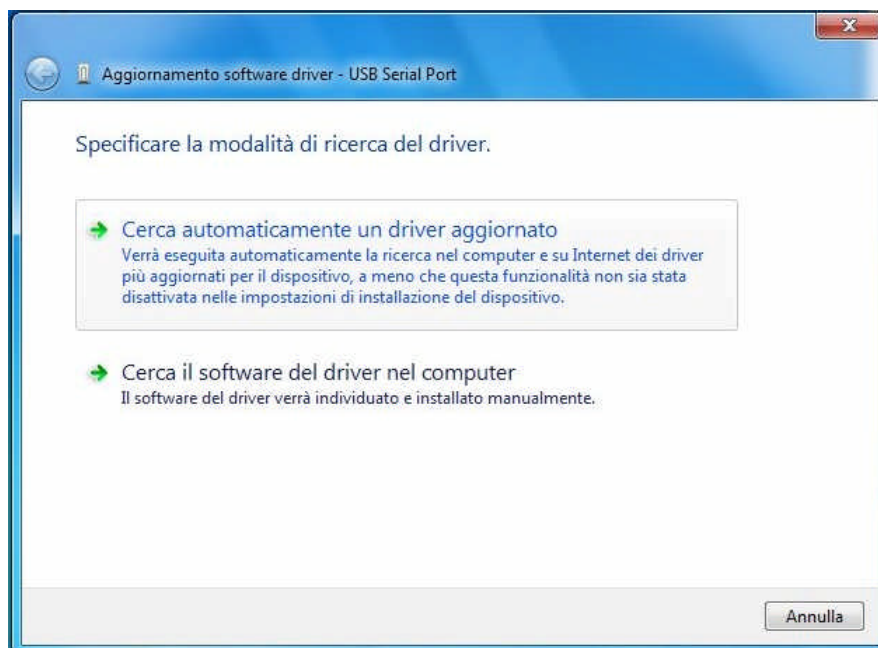


Figure 18 Driver software update – USB Serial Port.

Clicking on “Search driver software on PC” selection, you choose the driver path, like in Figure 19 below.

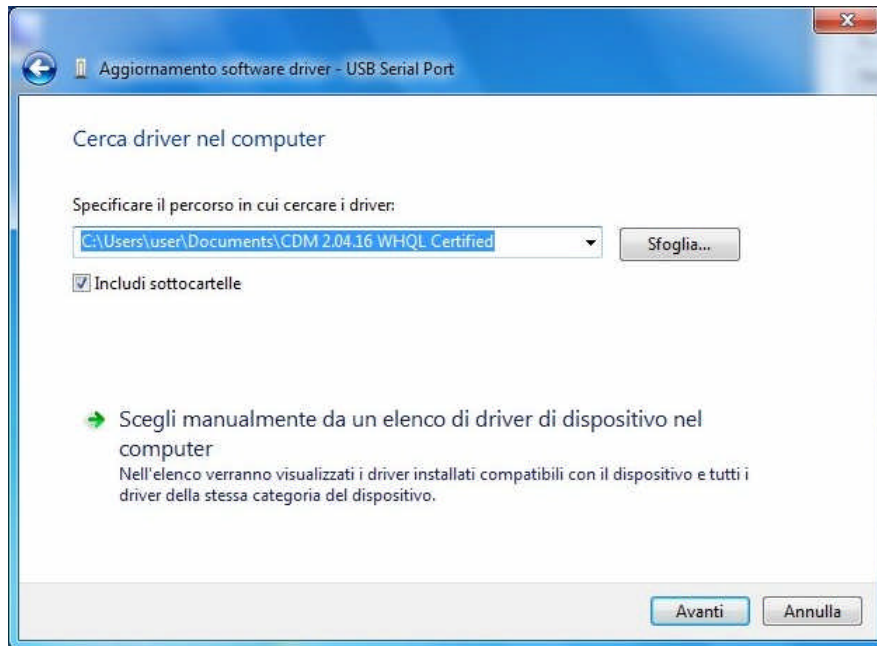


Figure 19 Driver software update – USB Serial Port.

Via “Browse” button select the folder where you extracted the files.
Click on “Next” button proceeding with installation of device driver, as showed in Figure 20 below.

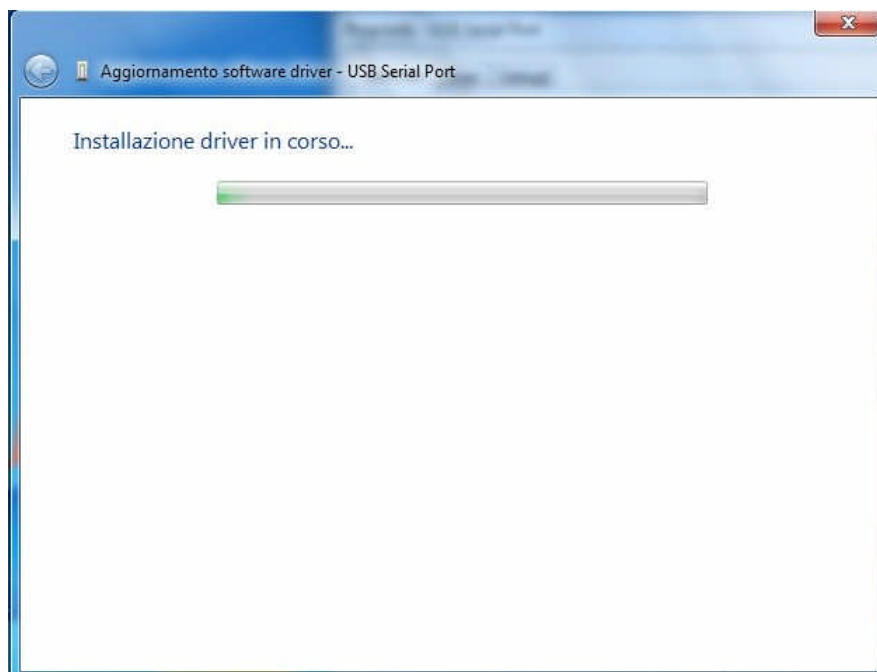


Figure 20 Driver software update – USB Serial Port.
Driver installation in progress.

When the installation is finished, the mask in Figure 21 is showed.
In that mask you are informed that USB Serial Port driver are successfully installed.

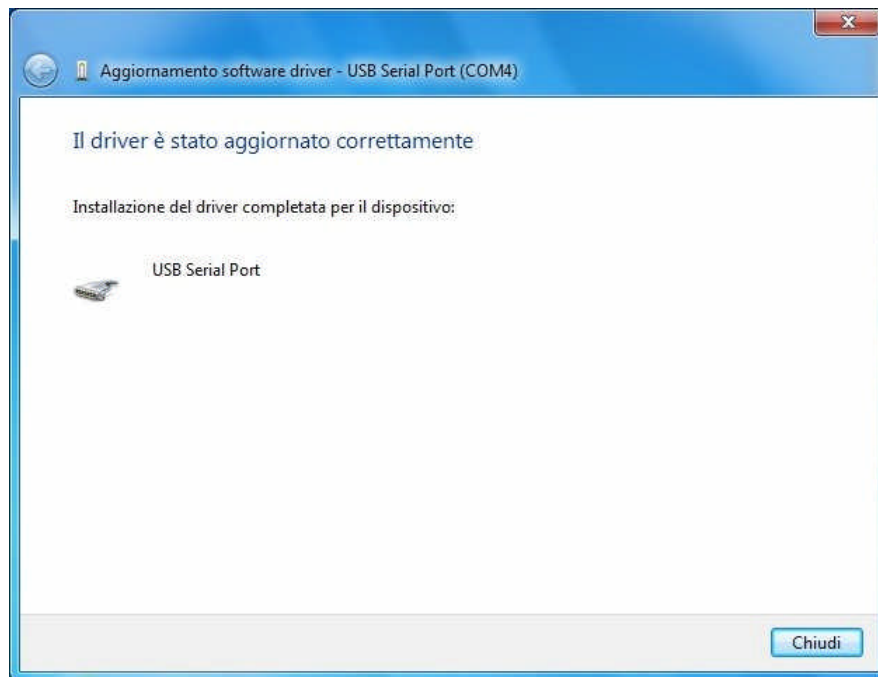


Figure 21 USB Serial Port Driver installation

